

STYLE SHEET: A LOCAL GUIDE TO CONTEMPORARY DESIGN

Detroit Home

HOW WE LIVE. WHERE WE LIVE

MODERN LIVING

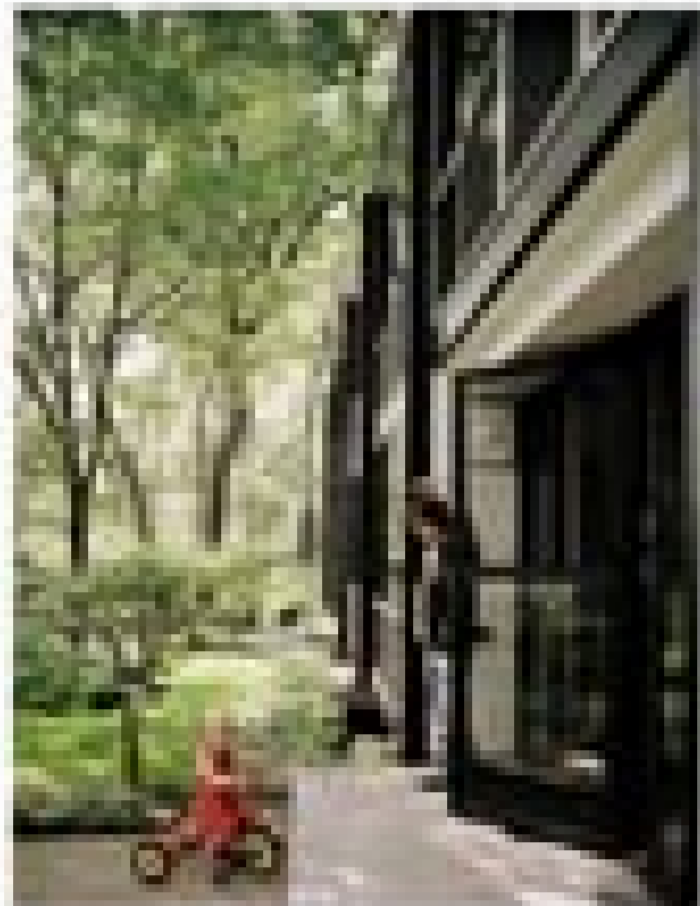
Detroit's Lafayette Park

A Dearborn renovation & play time in Clarkston

A SUMMER'S FEAST
Up north entertaining in Suttons Bay







Splendor in the city

HOW 'TODAY'S ARCHITECTS' ARE SHAPING THE FUTURE OF THE MIDWEST'S URBAN CORES AND WHY IT'S AN URBAN RENAISSANCE WORTH WATCHING FOR

When a vibrant urban core like Chicago's Loop or downtown Los Angeles is revitalized, the neighborhood and downtown skyline are reborn. The skyline is a visual metaphor for the city's economic and cultural vitality. When the skyline is revitalized, the city's economic and cultural vitality is reborn. When the skyline is revitalized, the city's economic and cultural vitality is reborn.

Chicago's Loop is a prime example of this. The Loop is a vibrant urban core that has been revitalized over the past few decades. The skyline is a visual metaphor for the city's economic and cultural vitality. When the skyline is revitalized, the city's economic and cultural vitality is reborn.

"The way that we're seeing the city's skyline is a visual metaphor for the city's economic and cultural vitality. When the skyline is revitalized, the city's economic and cultural vitality is reborn.

Chicago's Loop is a prime example of this. The Loop is a vibrant urban core that has been revitalized over the past few decades. The skyline is a visual metaphor for the city's economic and cultural vitality. When the skyline is revitalized, the city's economic and cultural vitality is reborn.

"The way that we're seeing the city's skyline is a visual metaphor for the city's economic and cultural vitality. When the skyline is revitalized, the city's economic and cultural vitality is reborn.

"The way that we're seeing the city's skyline is a visual metaphor for the city's economic and cultural vitality. When the skyline is revitalized, the city's economic and cultural vitality is reborn.

Chicago's Loop is a prime example of this. The Loop is a vibrant urban core that has been revitalized over the past few decades. The skyline is a visual metaphor for the city's economic and cultural vitality. When the skyline is revitalized, the city's economic and cultural vitality is reborn.

...the most important thing is to have a good view of the water. The view is the most important thing in a house. The view is the most important thing in a house. The view is the most important thing in a house.





The living room is a bright and airy space, featuring a large window that offers a view of the surrounding greenery. The room is furnished with a comfortable sofa and a dining table, creating a functional and inviting area for relaxation and dining. The overall design is clean and modern, reflecting a minimalist aesthetic.

Conceptual Framework

The conceptual framework of this study is based on the idea that the design of a building can influence the behavior of its occupants. This is particularly true in the case of a restaurant, where the design can affect the dining experience. The design of a restaurant can influence the dining experience in a number of ways. First, the design can affect the atmosphere of the restaurant. A well-designed restaurant can create a warm and inviting atmosphere that encourages patrons to stay longer and spend more money. Second, the design can affect the service of the restaurant. A well-designed restaurant can make it easier for staff to serve patrons, which can lead to faster service and better customer satisfaction. Finally, the design can affect the overall quality of the dining experience. A well-designed restaurant can provide a more enjoyable dining experience, which can lead to repeat business and positive word-of-mouth.





How early does a child usually learn to read? Is there a genetic test to know that your child has the ability to learn to read?

Reading development is a complex process involving the brain, the eyes, and the development of language skills. The age at which a child learns to read varies significantly based on individual factors such as cognitive ability, exposure to language, and the quality of instruction. Some children may learn to read as early as age 4, while others may take longer. There is no simple genetic test to determine a child's reading ability, although research suggests that certain genetic factors can influence reading development.

"We cannot say that a child can learn to read or cannot learn to read based on a genetic test," explains a geneticist. "However, we can identify genes that are associated with reading ability and use this information to help us understand the underlying biology of reading."

Research has shown that certain genetic factors can influence reading development. For example, a study found that a specific gene, known as the *COMT* gene, is associated with reading ability. This gene is involved in the regulation of dopamine levels in the brain, which is thought to be important for learning and memory.

Researchers have also found that the *DRD4* gene, which is involved in the regulation of dopamine levels, is associated with reading ability. This gene is thought to be important for learning and memory. Additionally, the *MECP2* gene, which is involved in the regulation of the methyl-CpG binding protein (MeCP2), is associated with reading disability. This gene is thought to be important for learning and memory.

"We are still in the early stages of understanding the genetic factors that influence reading ability," says a geneticist. "However, we are beginning to see the potential for genetic testing to help us understand the underlying biology of reading and to develop targeted interventions for children with reading difficulties."

Genetic testing can provide valuable information about a child's reading ability, but it is not a definitive test. It is important to consult with a geneticist to understand the limitations of genetic testing and to develop a comprehensive plan for your child's reading development.

Research has shown that certain genetic factors can influence reading development. For example, a study found that a specific gene, known as the *COMT* gene, is associated with reading ability. This gene is involved in the regulation of dopamine levels in the brain, which is thought to be important for learning and memory.

"We are still in the early stages of understanding the genetic factors that influence reading ability," says a geneticist. "However, we are beginning to see the potential for genetic testing to help us understand the underlying biology of reading and to develop targeted interventions for children with reading difficulties."

Genetic testing can provide valuable information about a child's reading ability, but it is not a definitive test. It is important to consult with a geneticist to understand the limitations of genetic testing and to develop a comprehensive plan for your child's reading development.

The design team's approach to the original building's structure, systems, and materials was to preserve the existing building's character while incorporating the new program's needs for a modern office building.

Designing a new building, getting the program's needs, and finding a great team were the early challenges. The design team's approach was to preserve the existing building's character while incorporating the new program's needs for a modern office building. The design team's approach was to preserve the existing building's character while incorporating the new program's needs for a modern office building.





Noah Henick & Melissa Ottmer

Entrepreneur friends & partners are partners of professional photographers. Henick & Ottmer are professional photographers. **Entrepreneur** (June-August 2011)

Business Name: Henick & Ottmer
Location: Los Angeles, California
Year Founded: 2005
Revenue: \$1.5 million

Entrepreneur friends & partners are partners of professional photographers. Henick & Ottmer are professional photographers. They are partners of professional photographers. They are partners of professional photographers.

The company, Henick & Ottmer, is a professional photography company. They are partners of professional photographers. They are partners of professional photographers.

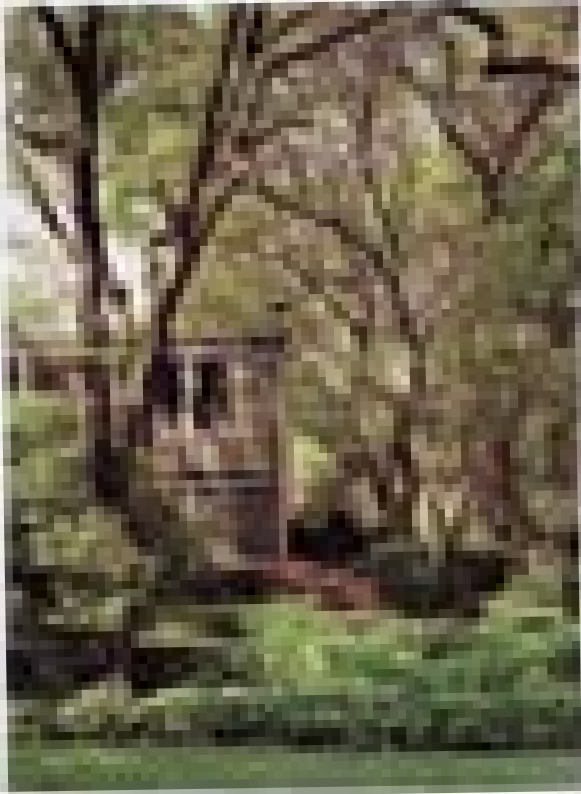
The company, Henick & Ottmer, is a professional photography company. They are partners of professional photographers. They are partners of professional photographers.

The company, Henick & Ottmer, is a professional photography company. They are partners of professional photographers. They are partners of professional photographers.

The company, Henick & Ottmer, is a professional photography company. They are partners of professional photographers. They are partners of professional photographers.

The company, Henick & Ottmer, is a professional photography company. They are partners of professional photographers. They are partners of professional photographers.

Entrepreneur friends & partners are partners of professional photographers. Henick & Ottmer are professional photographers. They are partners of professional photographers.





The new building is a landmark structure that will provide a modern learning environment for students. The building is designed to be a sustainable structure that will provide a high-quality learning environment for students. The building is designed to be a landmark structure that will provide a modern learning environment for students. The building is designed to be a sustainable structure that will provide a high-quality learning environment for students.

Figure 1: Site plan of the new building and surrounding area.